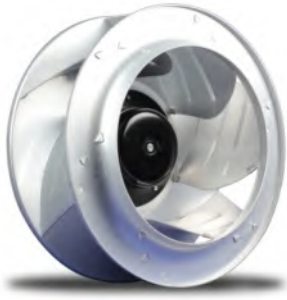


EC Centrifugal Fans

Backward Curved, $\Phi 310$

EC后向离心风机



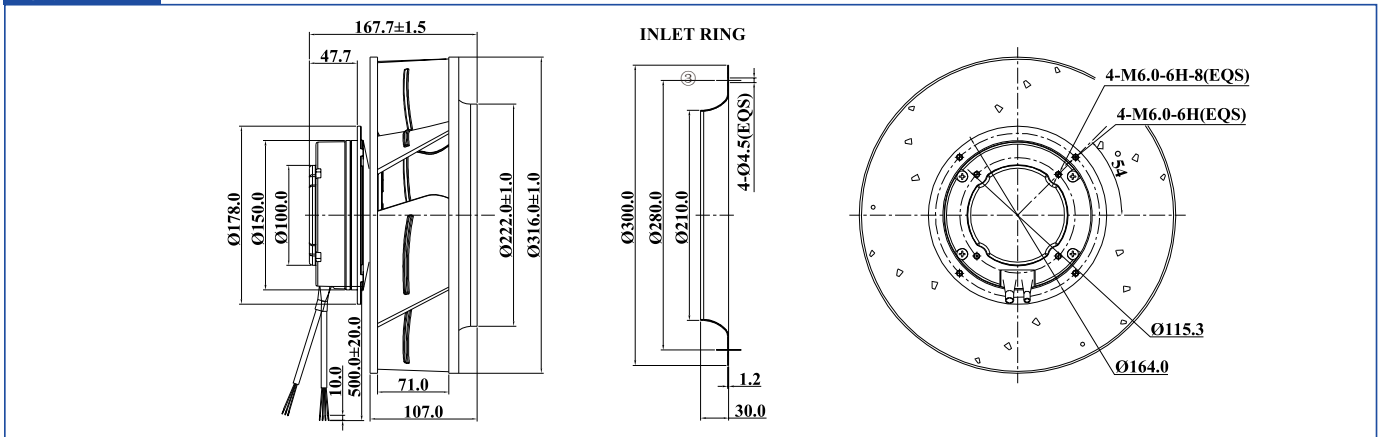
Impeller: Metal aluminum sheet
Motor: EC brushless external rotor motor
Insulation: Class B
Approvals: CE; UL E306337
Operating Temperature: -20~+60°C
Technical Features: Control input 0-10VDC/PWM, tach output. Locked rotor protection, reverse polarity. Current limited, soft start

叶轮材质: 金属铝合金
 电机类型: EC无刷外转子电机
 绝缘等级: Class B
 产品符合的认证: CE; UL E306337
 工作温度: -20~+60°C
 技术特性: 调速输入0~10VDC/PWM, 调速信号输出, 堵转, 极性、限流保护, 软启动

技术参数 Specifications

| Listed Model 产品型号 | Rated Voltage 额定电压 | Operating Voltage 工作电压 | Rated Current 额定电流 | Rated Power 额定功率 | Rated Speed 额定转速 | Air Flow 风量 | | Air Pressure 风压 | | Noise Level 噪音 | Net Weight 重量 |
|----------------------|-----------------------|---------------------------|-----------------------|---------------------|---------------------|----------------|-------------------|--------------------|--------------------|-------------------|------------------|
| Part NO. | VAC | VAC | A | W | RPM | CFM | m ³ /h | mmH ₂ O | inH ₂ O | dBA | Kg |
| PI1E310108HB2M | 115 | 92~138 | 5.0 | 340.0 | 2,350 | 1555 | 2643 | 84.69 | 3.33 | 71 | 4.3 |
| PI2E310108HB2M | 230 | 184~276 | 2.5 | 340.0 | 2,350 | 1555 | 2643 | 84.69 | 3.33 | 71 | 4.3 |
| PI1E310108UB2M | 115 | 92~138 | 6.5 | 480.0 | 2,600 | 1696 | 2880 | 95.6 | 3.76 | 74 | 5.2 |
| PI2E310108TB2M | 230 | 184~276 | 5.0 | 680.0 | 3,000 | 1930 | 3278 | 101.9 | 4.01 | 79 | 5.2 |

外形 Outline



曲线 Curves

